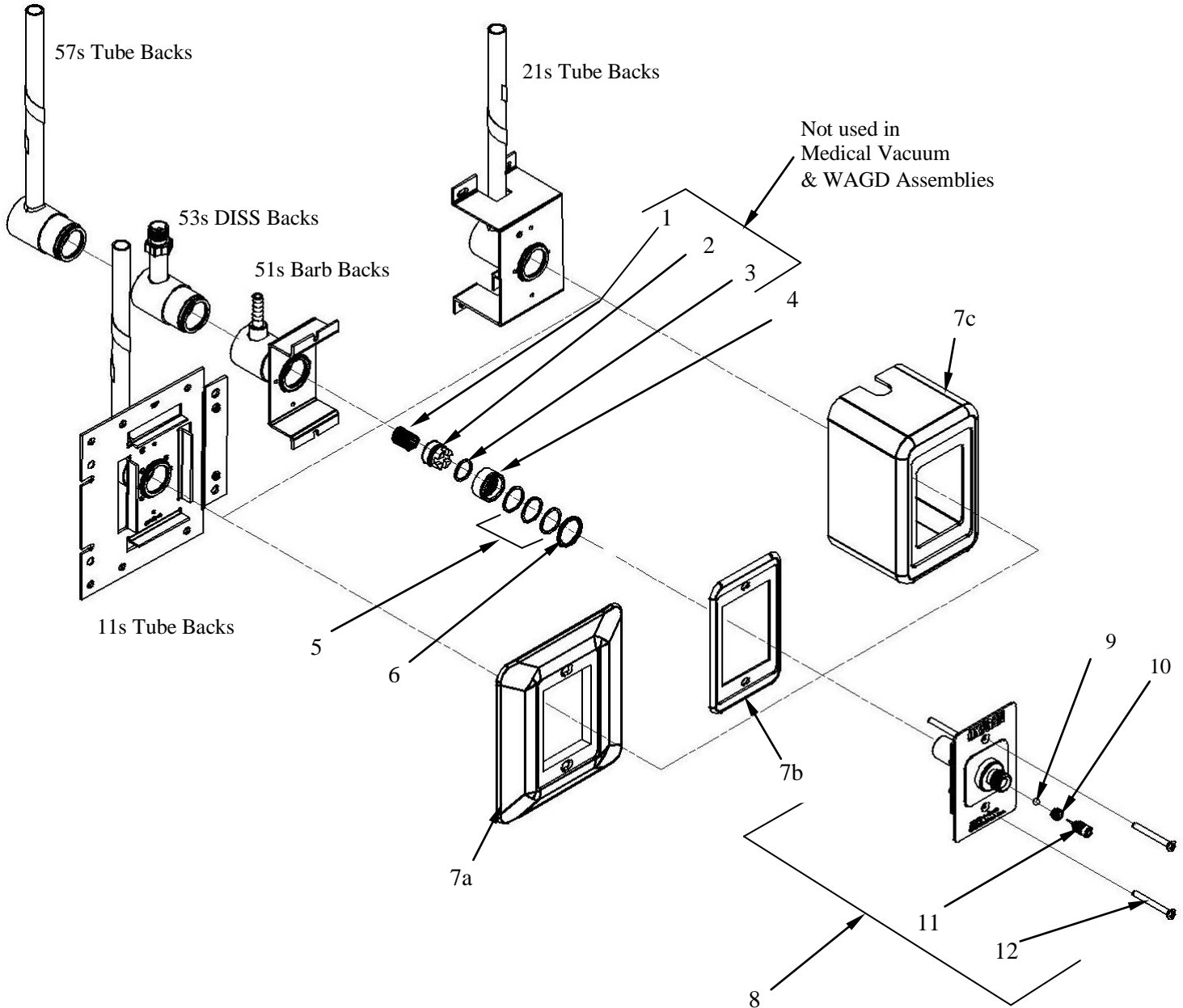


**90 Degree DISS STYLE OUTLETS – XF SERIES**

DISS Style Compatible

Oxygen Outlet Shown



Item 8 Includes Items 9 through 12 in the Finishing Kit

## 90 Degree DISS Style Outlets – XF SERIES Bill of Material

Item	Part Number	Description	Quantity	Note
1.	13-1003R	Spring	1	
2.	XC1000-5R	Poppet	1	
3.	11-0050R	Poppet O-Ring	1	<b>A</b>
4.	XC1000-6R	Insert Sleeve	1	
5.	11-0047R	Sleeve O-Ring	3	<b>B</b>
6.	12-1045R	Retaining Ring	1	
7a.	XC1000-9R	Finishing Kit Trim Plate	1	
7b.	XC1000-10R	Trim Plate Cover	1	
7c.	XC2100-3R	Finishing Kit Housing (Surface Mount)	1	
8.	See Below	XF Finishing Kit Assemblies	See Below	
9.	F1000-13R	Ball Check	1	
10.	F1000-145R	DISS CV Seat	1	
11.	See Below	Cartridge Assy (Primary Valve Kit)	See Below	
12.	30-0003	Mounting Screw Kit (2) 12-3037	1	

**Item 8 - Outlet Finishing Kits** ( All kits are assembled with Items 9 through 12  
Except Medical Vacuum and WAGD, Items 9 and 10 are not required)

XF1004-A	Nitrous Oxide	1
XF1008-A	Carbon Dioxide	1
XF1012-A	Nitrogen	1
XF1016-A	Medical Air	1
XF1022-A	Medical Vacuum	1
XF1024-A	Oxygen	1
XF1032-A	WAGD (Waste Anesthetic Gas Disposal)	1
XF102080-A	Instrument Air	1

**Item 11 - Cartridge Assembly (Primary Valve Kit)**

F1004RC	Nitrous Oxide	1
F1004RC	Carbon Dioxide	1
F1012RC	Nitrogen	1
F1000RC	Medical Air	1
F1022RC	Medical Vacuum	1
F1024ARC	Oxygen	1
F1032RC	WAGD	1
F102080RC	Instrument Air	1

**Secondary Valve Kit**

XC1000KR	Secondary Valve Kit for all Gases Except Medical Vacuum & WAGD ( Kit Includes Items 1 through 6 )	1
XC1022KR	Secondary Valve Kit for Medical Vacuum & WAGD ( Kit Includes Items 4 through 6 )	1

**Note:** **A:** Install O-Ring item 3, on Poppet item 2.      **B:** Install O-Rings item 5, onto Insert Sleeve item 4.